



THE ASSEMBLY AND CONNECTION OF THE IC-200-IM-R METER TO THE NS CIRCUIT BREAKER

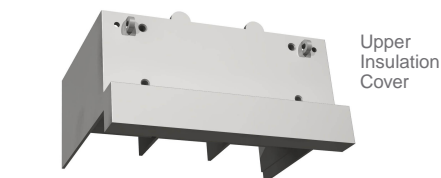
ASSEMBLY OF THE BRIDGE SET ANIMATED DIAGRAM

1. Place the IC 200 IM-R meter into position and secure with the two M4 fixing screws.
2. Slide the Plastic bridge insulator up and into position, ensuring the plastic pins locate into the meter.
3. Place and secure the NS copper bridge links (200 Amp rated) into the bottom of the meter using the M8 screws and washers provided.
4. Position the NS breaker so that the copper bridge link holes line up with the terminal connection holes in the top of the circuit breaker. Secure the breaker by using the two long screws provided with the breaker into position.
5. Secure the copper bridge links into the circuit breaker using the screws and washers provided with the circuit breaker.
6. Fit and secure the top bridge insulator with screws provided.
7. Fit the main copper conductors to the bottom of the Breaker using the screws and washers provided with the breaker.
8. Fit the main copper conductors to the top of the Meter using the M8 screws and washers provided with the meter.
9. Fit the terminal cover above the meter and secure.
10. Fit the terminal cover below the circuit breaker and secure using the screws provided with the circuit breaker.
11. Connect the Neutral cable into the green terminal marked "N" secure cable into position with cable clamp.
12. Fit the terminal cover over the cables and secure with the two screws provided.

Optional

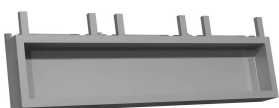
To connect the remote display connect the colour coded cable into the terminals marked " R", "B", "Y" and "G", secure cable with the fixing clamp on the cover. The wire in the cable is colour coded R=Red, B=Blue, Y=Yellow, and G=Green.

The meter has now been assembled and connected to the NS Circuit Breaker using Autometers optional NS Bridge Set.



Upper Insulation Cover

Bridge set for the NS Circuit breaker



Lower Insulation Plate



Flexible Copper Conductor (NS 200 Amp rated)

Product development is continuous and Autometers Ltd reserves the right to make alterations and manufacture without notice. Products as delivered may therefore differ from the descriptions and illustrations in this publication.

Sales Brochure IC200.1208

Autometers Systems Limited
4b Albany Road
Chorlton-cum-Hardy
Manchester M21 0AW

Tel: +44 (0) 161 861 9056
Fax: +44 (0) 161 881 3745
Email: sales@autometers.co.uk
Web: www.autometers.co.uk